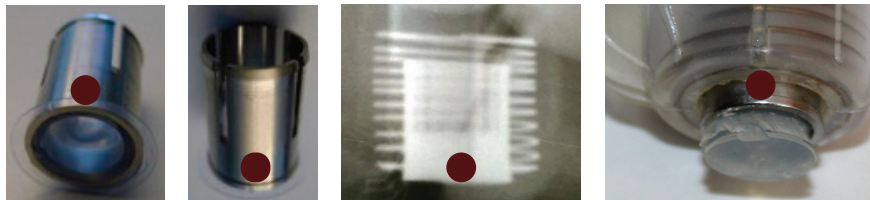


What is the Radio Opaque Cylinder we see in the X-ray?

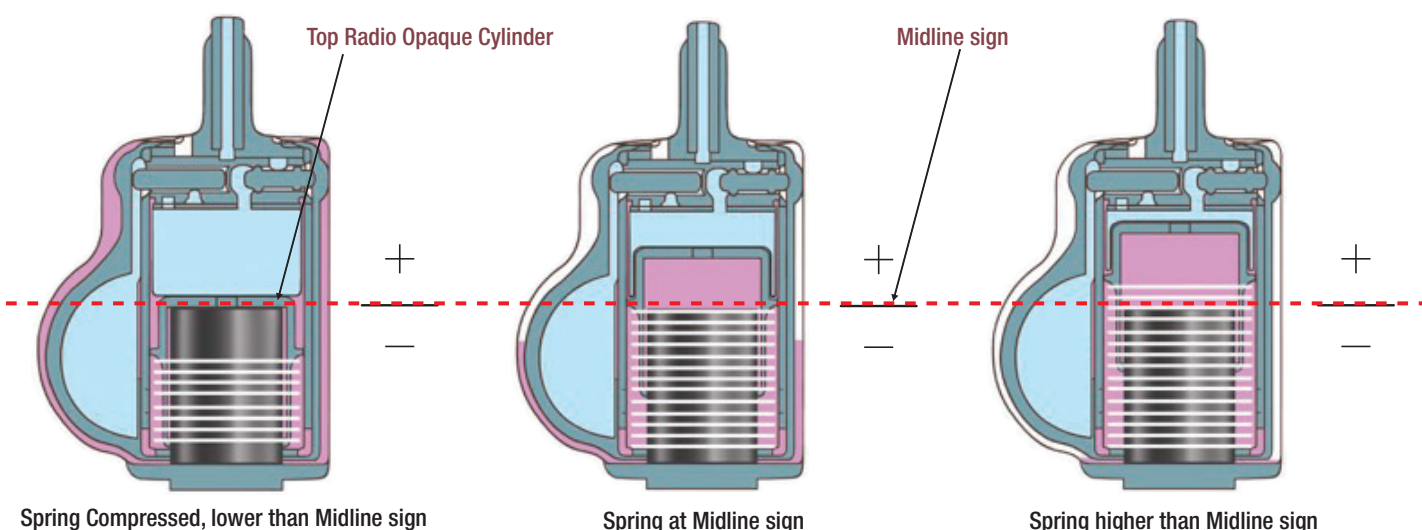
The Radio Opaque Cylinder is the stainless steel cylinder which compresses the silicone of the Compensation Pouch Septum.

Radio Opaque Cylinder ●



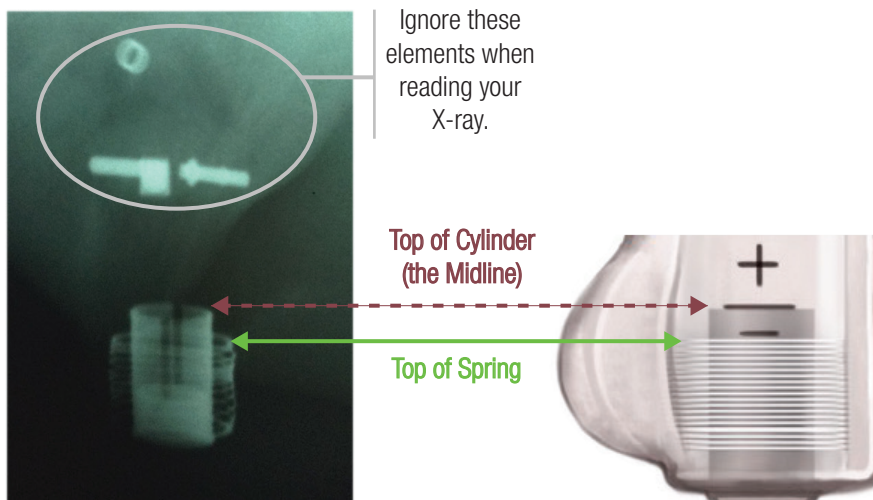
The ZSI 375 has been dissected at the level of the Compensation Pouch Septum in order to show the Radio Opaque Cylinder. This is usually not visible to the naked eye.

The **top of the Radio Opaque Cylinder is at the same level as the Midline sign** of the device even if the spring is moving.

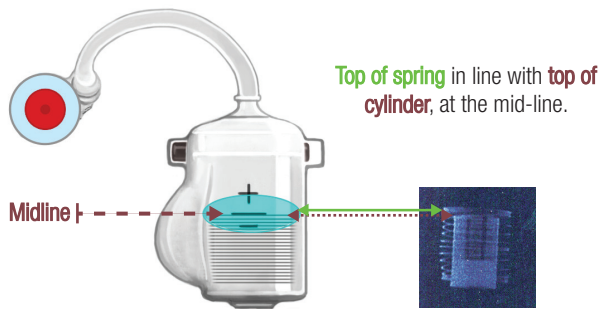


The relation between the spring and the stainless septum cylinder gives a clear picture of the state of the cuff.

- If the top of the spring is in line with the top of the cylinder, the cuff has the right amount of pressure.
- The higher the top of the spring sits above the top of the cylinder, the less pressure in the cuff.
- The lower the top of the spring sits below the top of the cylinder, the stronger the pressure in the cuff.

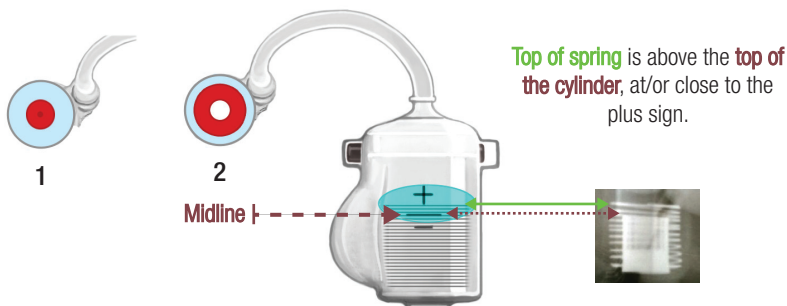


IDENTIFY DEVICE STATE IN AN XRAY



DEVICE WITH CORRECT CUFF PRESURE

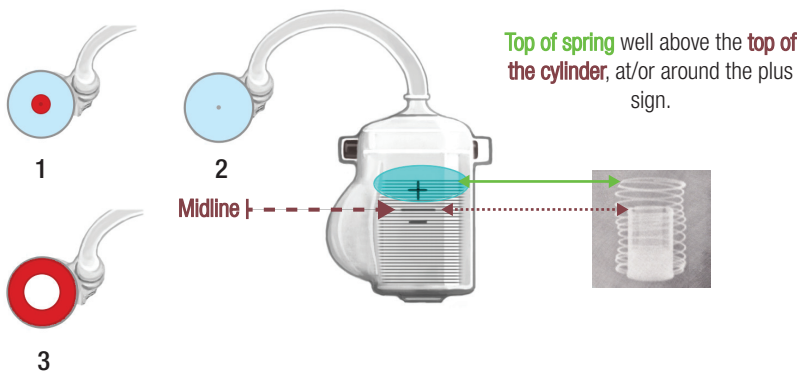
Top of the spring sits at the top of the cylinder. Device is active and functioning with the correct amount of pressure in the cuff and around the urethra.



DEVICE LACKS PRESSURE

Device lacks pressure because there is not enough pressure in the cuff. Therefore the top of the spring sits above the top of the cylinder. This could be due to:

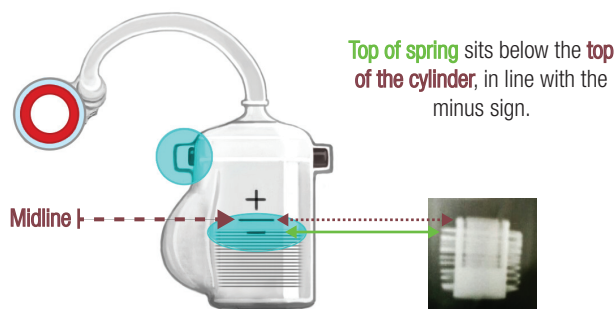
1. Urethral atrophía
2. Air was left in the device. With time it has passed through the silicone and the spring has risen to fill the empty space.



SPRING COMPLETELY DECOMPRESSED

This spring position means that something is wrong with the patient and/or the pressure in the device. The Spring is fully decompressed and its position is near or at the plus sign. This could be due to:

1. Urethral atrophía
2. Urethral necrosis
3. Device is leaking solution



DEVICE DEACTIVATED

Device has been deactivated, meaning that the spring has been locked down at the minus sign, leaving the cuff open and the urethra decompressed.