

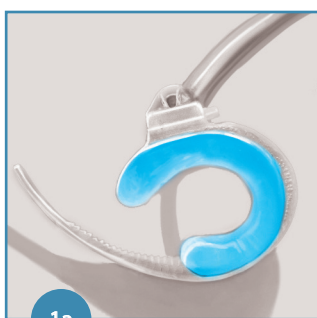
The device has been properly prepared and is ready to be deactivated before implantation

PREPARATION OF THE CUFF FOR IMPLANTATION/DEACTIVATION

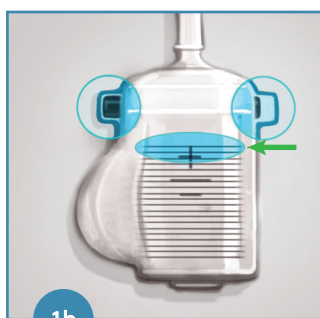
The cuff is flat and it must stay flat for the duration of implantation.

- STEP 1 PRESS AND RELEASE THE PUMP BUTTON UNTIL THE CUFF IS FLAT AND THE SPRING FULLY COMPRESSED
- STEP 2 REMOVE YOUR THUMB FROM THE PUMP BUTTON
- STEP 3 CHECK THAT THE SPRING IS FULLY COMPRESSED AND IS LEVEL WITH THE MINUS '-' SIGN
- STEP 4 PRESS THE DEACTIVATION BUTTON FIRMLY BEFORE THE SPRING RAISES UP
- STEP 5 WAIT 20 SECONDS. NOW CHECK THAT THE SPRING HAS STAYED COMPRESSED AT THE MINUS '-' SIGN

Picture guide on how to deactivate device before implantation

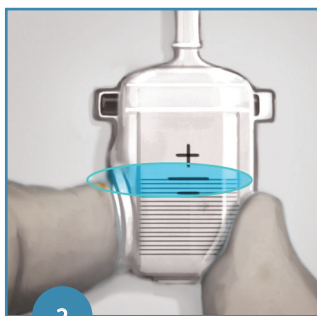


Cuff Inflated (device activated)

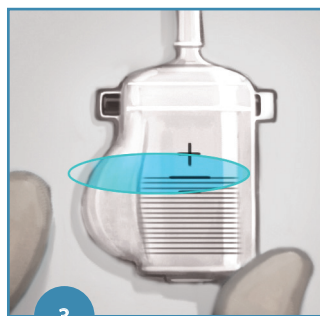


Spring released (device activated)

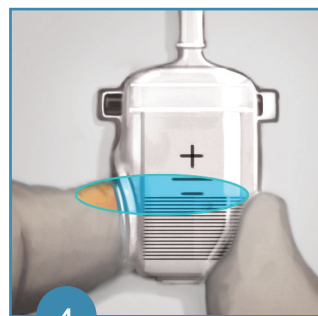
OUR GOAL IS TO
DEFLATE THE CUFF AND
DEACTIVATE THE ZSI 375
TO KEEP THE CUFF FLAT



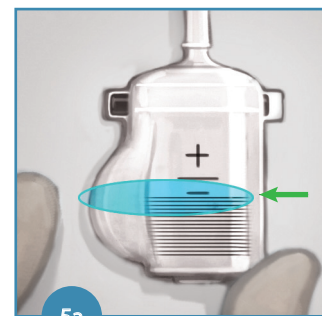
Press the pump button. The saline solution will go from the pump button to the tank.



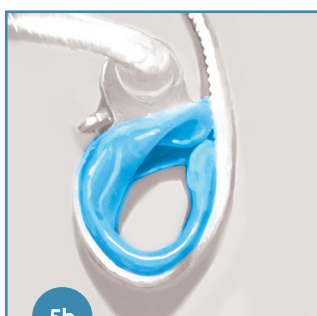
Release the pump button. The saline solution will go from the cuff to the pump button.



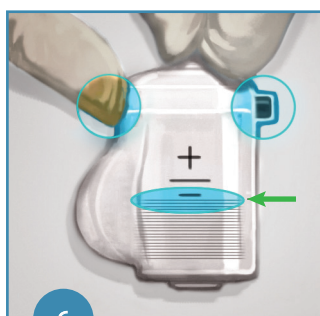
Repeat the process by pressing the pump button again.



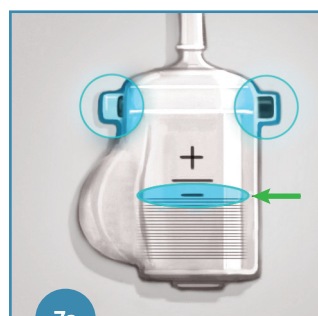
When the spring is fully compressed, you will no longer be able to press the pump button.



Cuff should now be deflated.



While the spring level with the minus '-' sign, remove finger from pump button and press the deactivation button **firmly**.



The cuff is flat. The spring is level with the minus '-' sign. Wait **20 seconds** and check that the ZSI 375 stays deactivated.



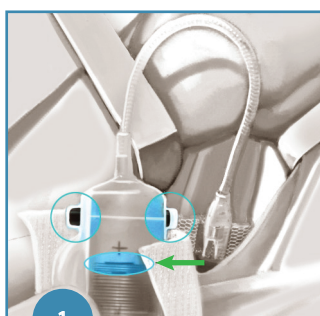
Cuff should be deflated.

Cuff is implanted, the device has been activated to be tested, spring is at the proper position

DEACTIVATION AFTER IMPLANTATION OF THE CUFF

- STEP 1 PRESS AND RELEASE THE PUMP BUTTON UNTIL THE SPRING IS FULLY COMPRESSED
- STEP 2 REMOVE YOUR THUMB FROM THE PUMP BUTTON
- STEP 3 CHECK THAT THE SPRING IS FULLY COMPRESSED AND IS LEVEL WITH THE MINUS '-' SIGN
- STEP 4 PRESS THE DEACTIVATION BUTTON FIRMLY
- STEP 5 WAIT 20 SECONDS. NOW CHECK THAT THE SPRING HAS STAYED COMPRESSED AT THE MINUS '-' SIGN

Picture guide on how to deactivate device before implantation



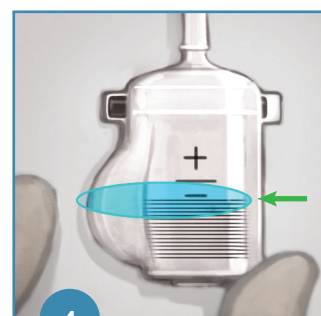
Cuff implanted around the urethra. Device activated and ready to be tested.



Spring level with the mid-line. Device is receiving proper pressure. Device ready to be deactivated.

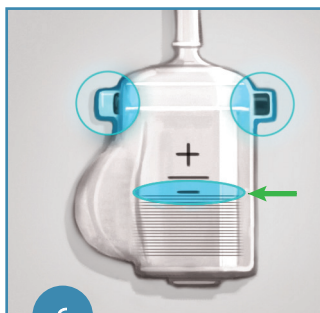


Press and release once or twice. The spring is fully stressed and the cuff is flat. We have to deflate the cuff and deactivate the ZSI 375 to maintain the cuff deflated during the healing period.



While the spring level with the minus '-' sign, remove finger from pump button and press the deactivation button **firmly**.

DEVICE DEACTIVATED



The spring is below the minus '-' sign. Wait **20 seconds** to be sure that the ZSI 375 has been properly deactivated.

DEVICE PROPERLY DEACTIVATED

**THE CUFF IS DEFLATED.
THE DEVICE IS PROPERLY
DEACTIVATED.
YOU CAN NOW IMPLANT THE PUMP,
SUTURE THE WINGS
AND THE PATIENT**

It is normal that the bulb of the pump button is inflated when the device is Deactivated

