

ZSI 375 PF

ARTIFICIAL URINARY SPHINCTER



**A solution
for male severe incontinence**

- adjustable cuff : one size fits all.
- for more information, visit **www.zsimplants.ch**

ZSI is ISO 13485 : 2004 / ZSI 375 PF is EC certificated

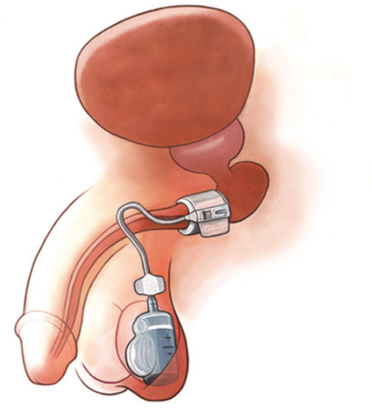
Local Distributor

ZSI (Zephyr Surgical Implant Sàrl)
C/Ulmann, route des Jeunes 4bis
1227 Les Acacias - Switzerland


Flyer, English version
Version 3, Aug 2016



ADJUSTABLE CUFF FROM 3.75 TO 5 cm



- 1 ZSI 375
- 2 5 ML SYRINGE
- 3 HUBER NEEDLES

- 1 ACTIVATED WHEN THE BUTTON (▼) PORTRUDES AT THE SIDE OF THE PUMP BUTTON



- 2 COMPENSATION POUCH SEPTUM

- 3 PRESSURE REGULATING TANK

- 4 PUMP BUTTON TO EMPTY THE CUFF (PRESS-RELEASE)



- 5 DEACTIVATED WHEN THE BUTTON (▼) PORTRUDES AT OPPOSITE SIDE OF THE PUMP BUTTON

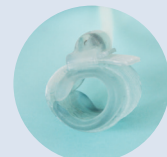


- 6 PUMP

- 7 WINGS TO SEW THE ZSI 375 TO THE INTERNAL SCROTAL TISSUE

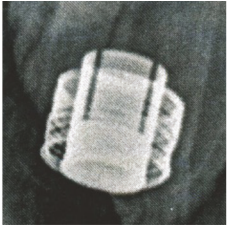


- 8 3,75 TO 5 CM ADJUSTABLE CUFF, MOULDED IN A CURVE

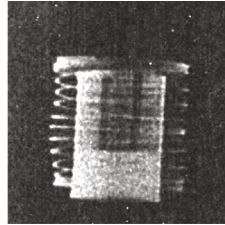


- 9 HYDRAULIC CIRCUIT SEPTUM

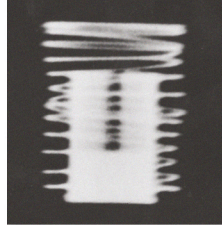
PERFORM A SCROTAL X RAY TO CHECK SPRING POSITION



The spring is compressed. It sits under the upper part of the cylinder.
The ZSI 375 is deactivated.



The spring is at normal compression. It sits in line with the top of the cylinder.
The ZSI 375 is activated.



The spring is fully decompressed. There is a lack of solution in the hydraulic circuit.

POSSIBILITY OF INCREASING ISSUED PRESSURE



FUNCTIONING

