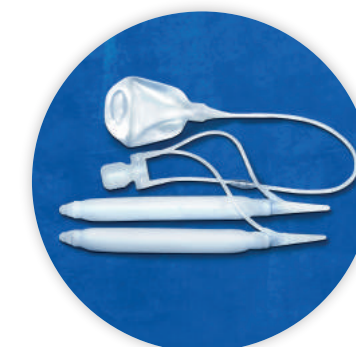


ZSI 375 ARTIFICIAL URINARY SPHINCTER



ZSI 475 INFLATABLE PENILE IMPLANT



For more information, visit
www.zsimplants.ch

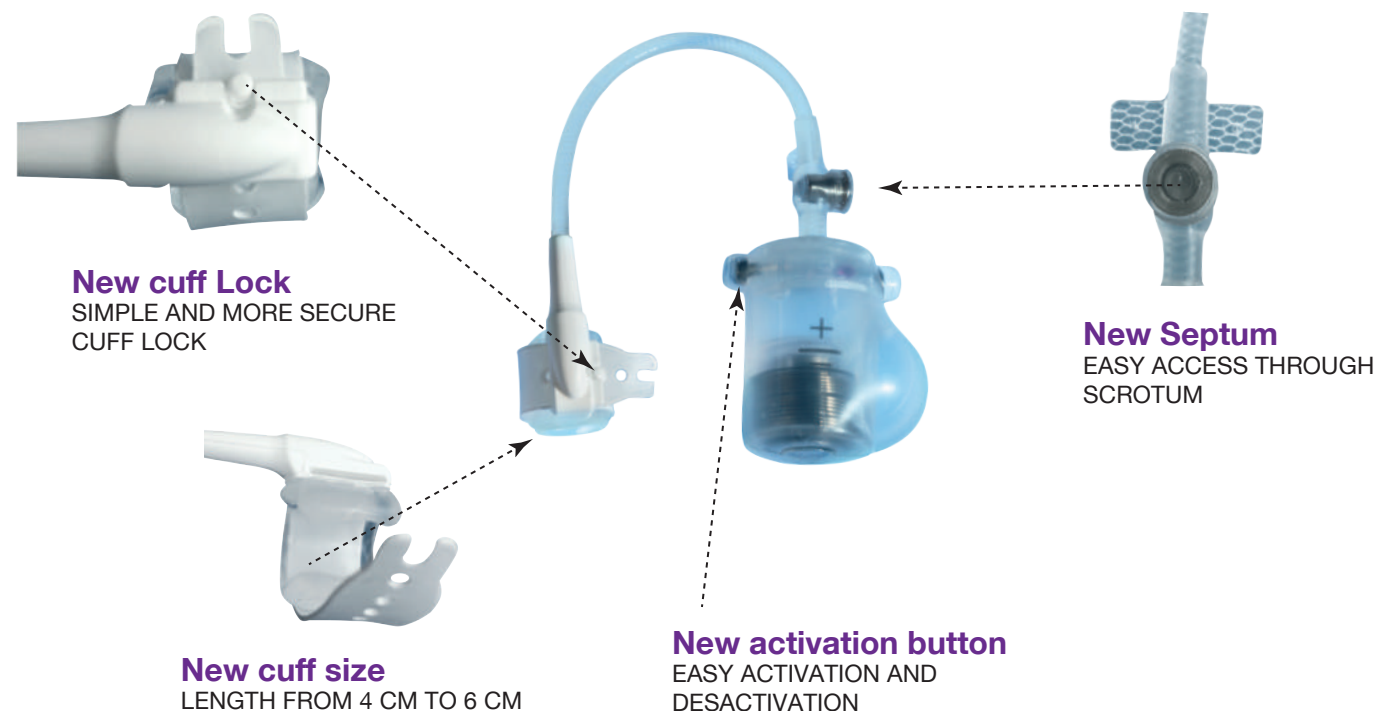
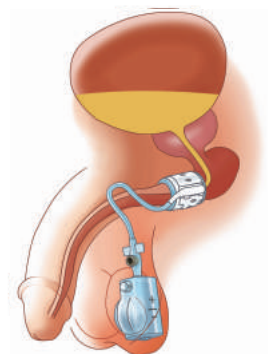


The best solution
for severe male incontinence
for erectile dysfunction

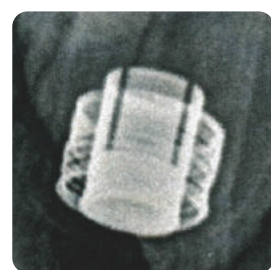


ZSI 375

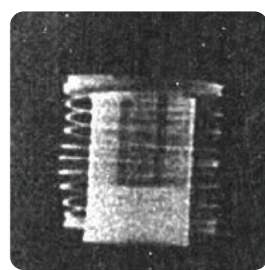
New generation



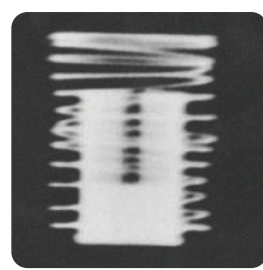
ZSI 375 is delivered pre-filled and pre-connected.
The time of preparation in the operating room
is minimized.



Sphincter is deactivated.
The spring is compressed.
To activate, press the
activation button.



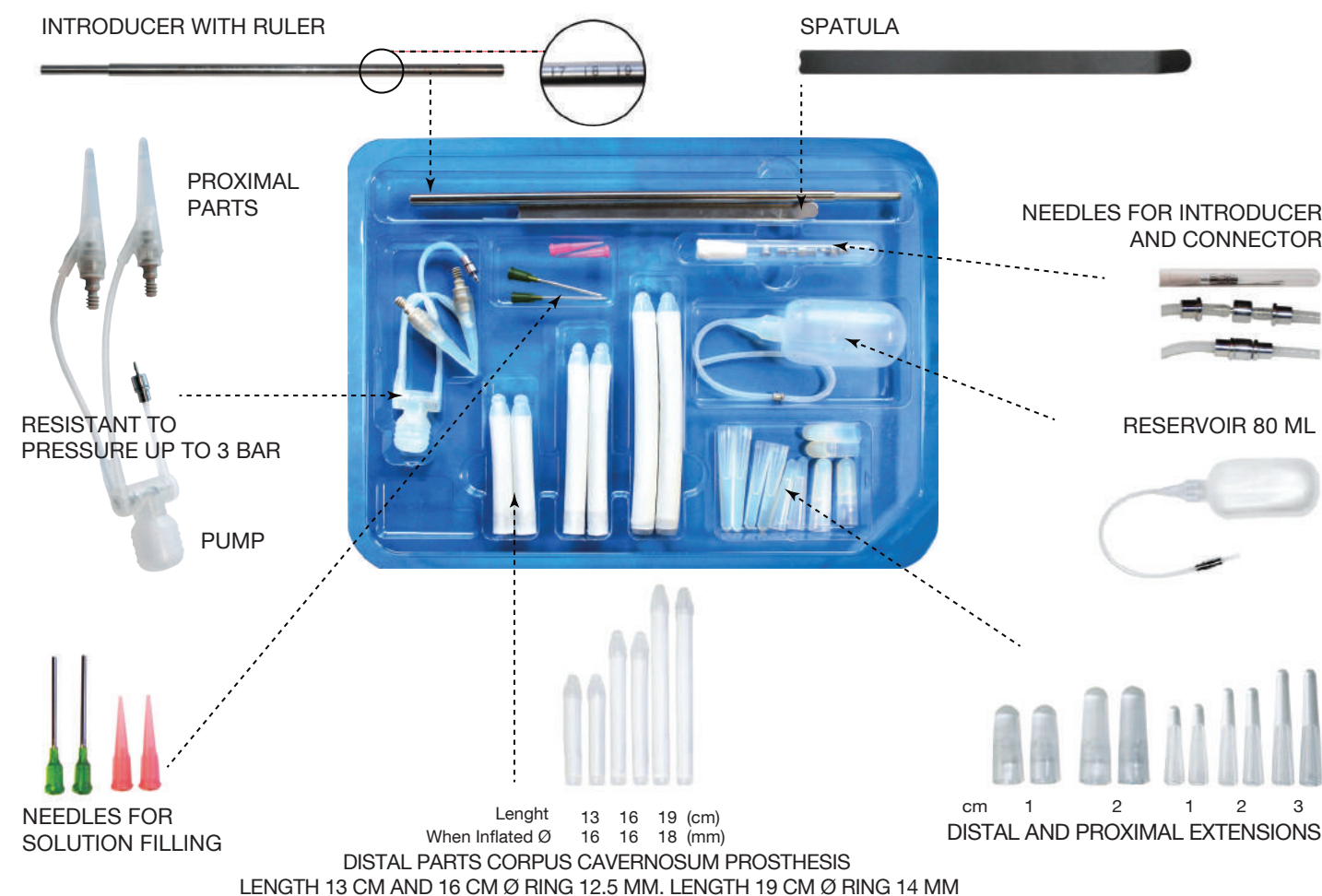
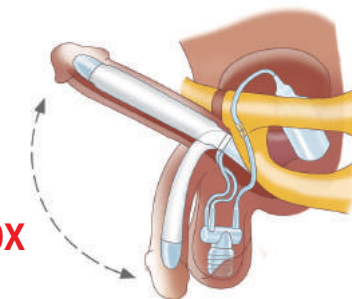
Spring is in perfect working position
after activation. The top of the spring
is positioned at the top of the radio
opaque cylinder.



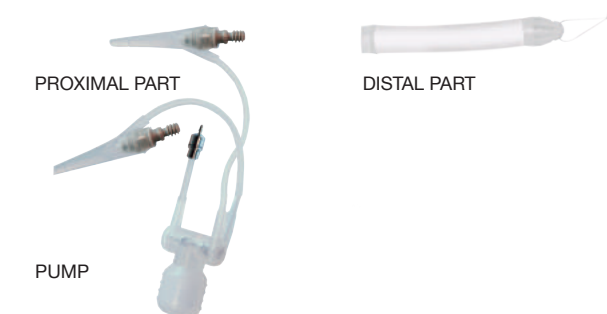
The spring is decompressed. The
position of the spring can be adjusted
by injecting saline solution through the
hydraulic circuit septum.

ZSI 475

All lengths of penile implant
All accessories are available in one box



EASY AND SECURE ASSEMBLY



The pump is connected to the proximal part and the
proximal part is screwed together with the distal cylinder.
No tools needed to assemble parts.

For bigger-sized penises we provide a special set with a base length of 22 cm, which can be mounted from 21 to 27 cm.
Cylinder diameter 21 mm Ø, 14 mm at the ring.